

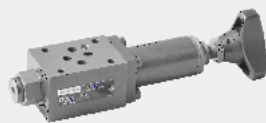


317

ZDR6D...30 型

6

210bar
30L/min



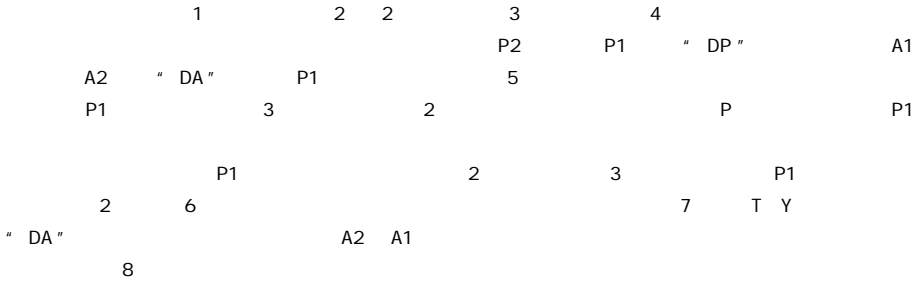
目录

02
02
03
03
04
05

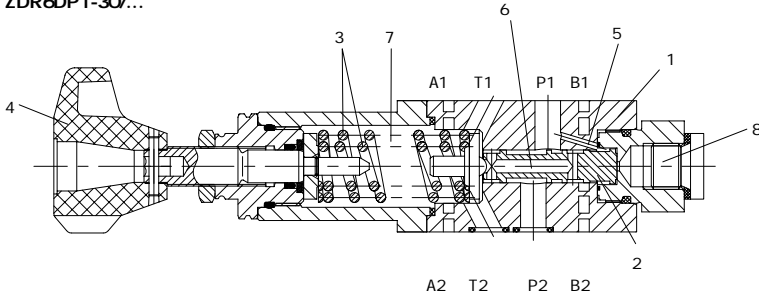
特点

-
- DIN24340A ISO4401
- 4
- 3
·
·
·
·
·

ZDR6D



ZDR6DP1-30/...

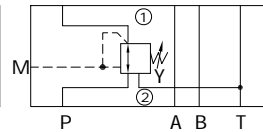
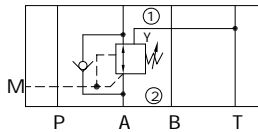
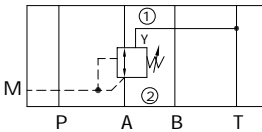


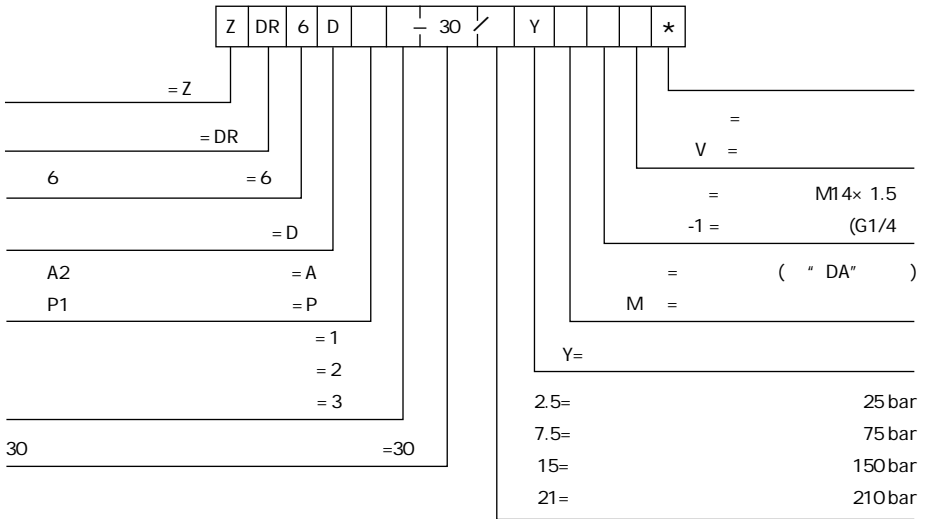
= =

ZDR6DA...30/...YM

ZDR6DA...30/...Y

ZDR6DP...30/...YM



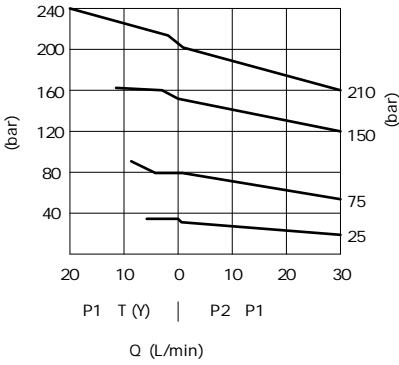


03

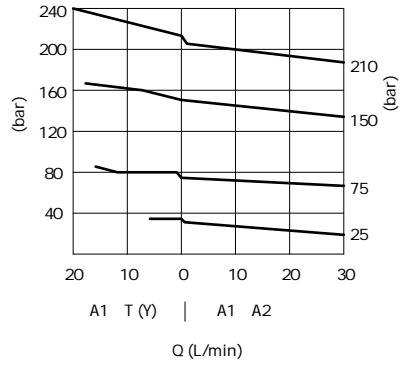
	-	
	-	
	-30 +80 ()	
	-20 +80 ()	
mm ² /s	10 800	
	NAS1638 9	ISO4406 20/18/15
() bar	315	
() bar	25; 75; 150; 210	
bar	60	
L/min	30	
Kg	1.2	

HLP46 $\varnothing = 40 \pm 5$

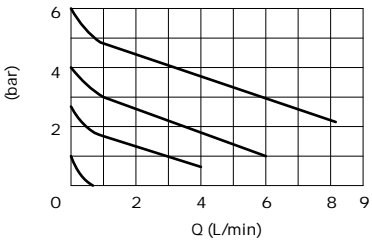
ZDR6DP ...30/...



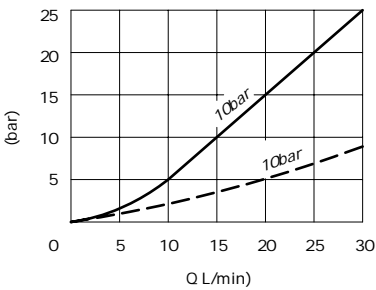
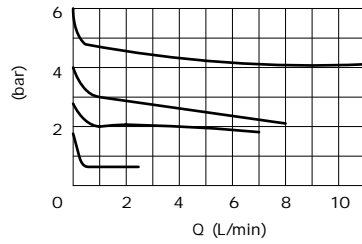
ZDR6DA...30/...



ZDR6DP ...30/...

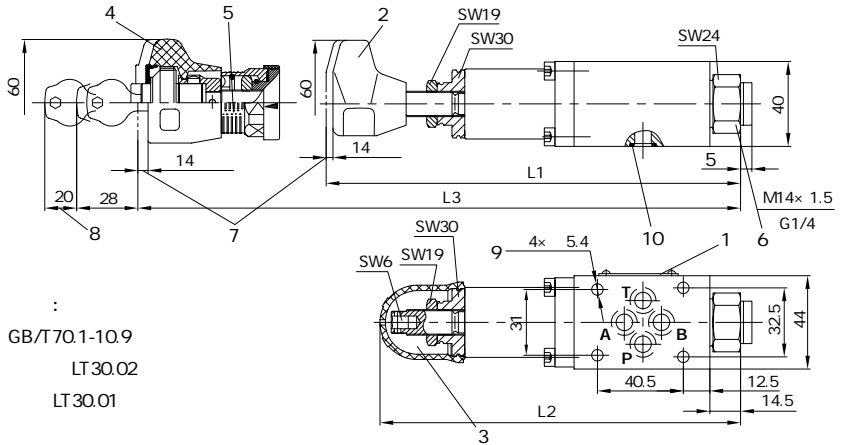


ZDR6DA...30/...



A2 P1 10L/min 30bar
36bar

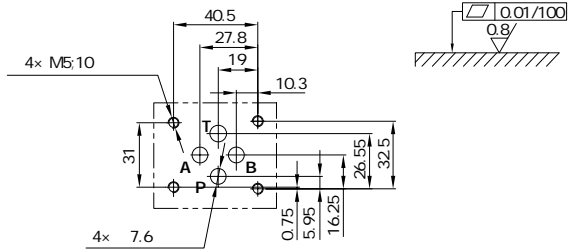
(mm)



M5 GB/T70.1-10.9
LT30.02
LT30.01

$M_k=8.9\text{Nm}$

- 1
- 2 " 1"
- 3 " 2"
- 4 " 3"
- 5
- 6
- M14x 1.5 G1/4 12
- 7
- 8
- 9
- 10 O 9.25x 1.78 A B P T



	L1	L2	L3
DA	208	182	203
DP	196	170	191

03

中国

+86 400 101 8889

美国

+01 630 995 3674

德国

+49 172 3683463

日本

+81 03 6809 1696



©



318

ZDR6D...L4X 型

(NG) 6
210bar
50L/min



目录

02
03
03
03
04
05

特点

-
- DIN24340A ISO4401
- 4
- 2
·
·
·
·
·

ZDR6D

1 2 2 3 4

DA

A1 A2 A2 5

A2 3 2

A2 5 A2 3 A2

A2

2

9

7

6

T

Y

8

DA

A2

A1

03

DP DB

DP

P1

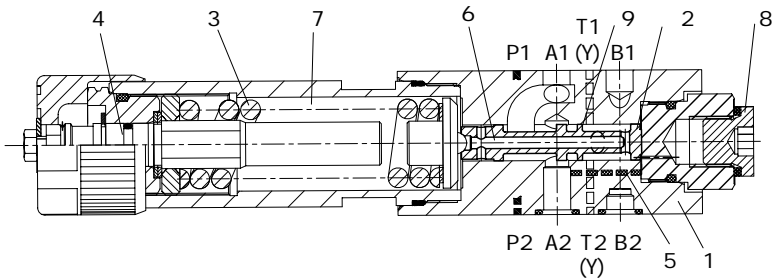
P1

DB

P1

B

ZDR6DA1-L4X/...YM..



1. DB

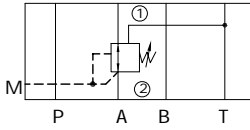
P A

B

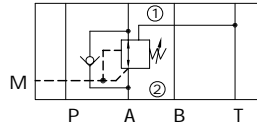
A

2.

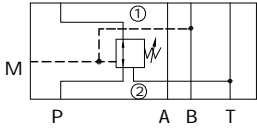
ZDR6DA...L4X/.YM



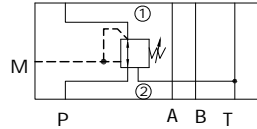
ZDR6DA...L4X/.Y



ZDR6DB...L4X/.YM



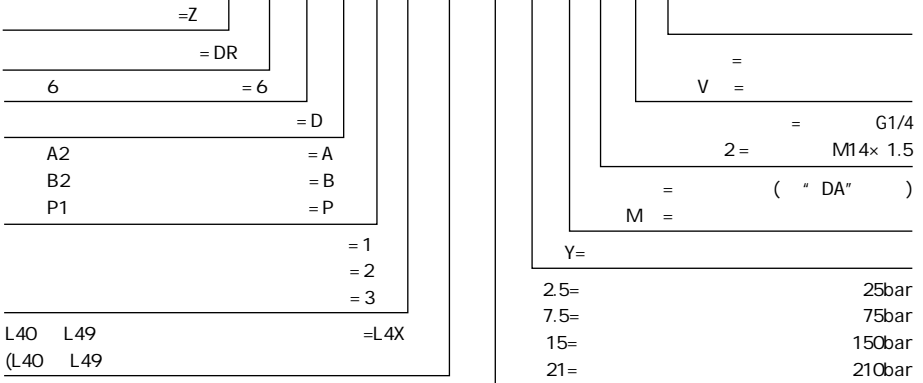
ZDR6DP...L4X/.YM



=
=

03

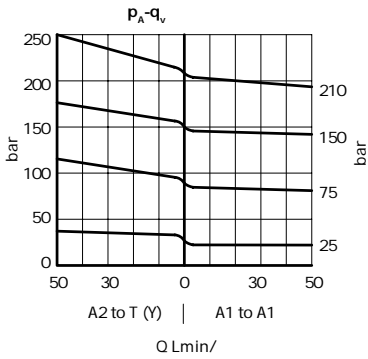
Z DR 6 D - L4X / Y *



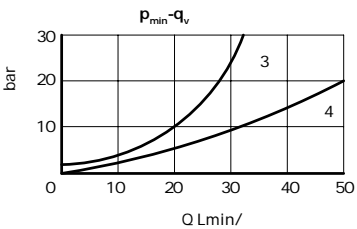
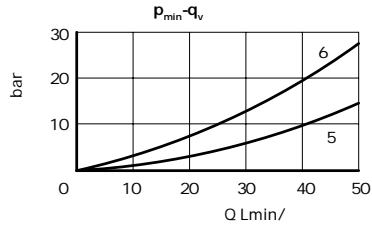
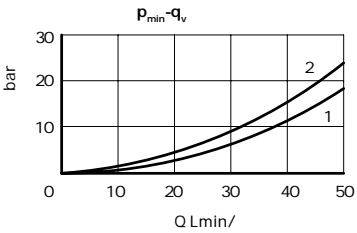
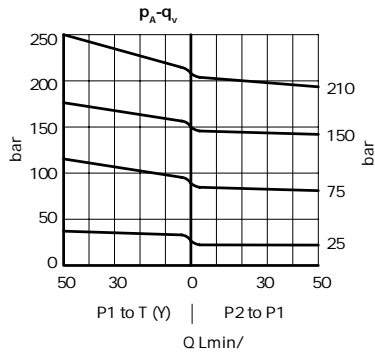
	-
	-
	-30 +80 ()
	-20 +80 ()
mm ² /s	10 800
	ISO 4406 20/18/15 NAS 1638 9
() bar	315
() bar	25; 75; 150; 210
T(Y) bar	160
L/min	50
kg	1.2

HLP46 $\vartheta = 40 \pm 5$

ZDR6DA



ZDR6DP ZDR6DB



- 1 A1 A2
- 2 A2 T(Y) ()
- 3 A2 A1
- 4 A2 A1
- 5 P2 P1
- 6 P1 T(Y) ()

=0

中国

+86 400 101 8889

美国

+01 630 995 3674

德国

+49 172 3683463

日本

+81 03 6809 1696



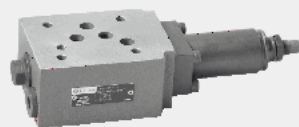
©



319

ZDR10D...40 型

10
210bar
50L/min

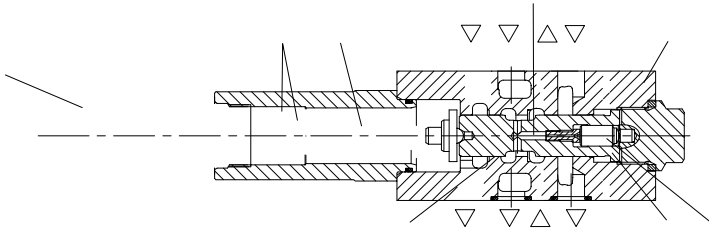


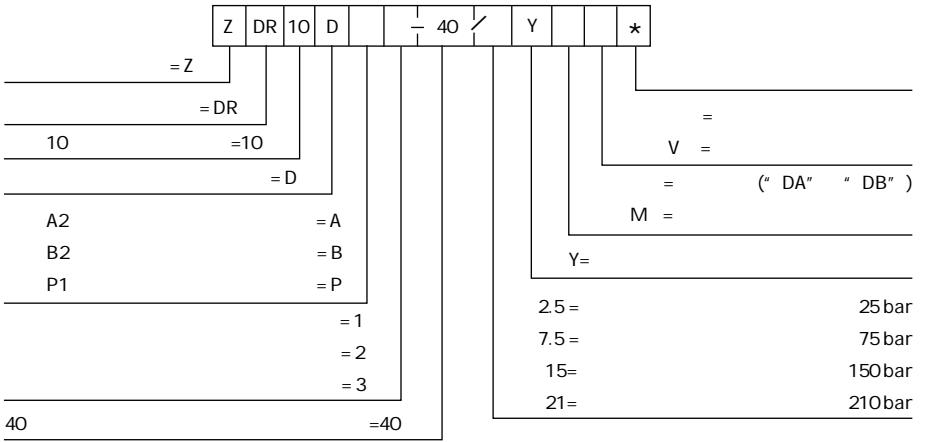
目录

02
02
03
03
04
05

特点

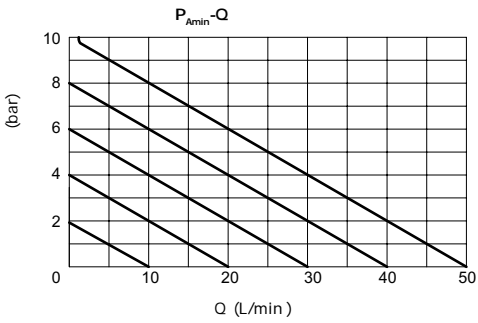
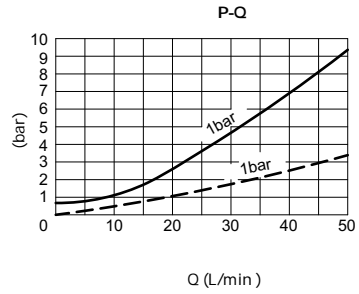
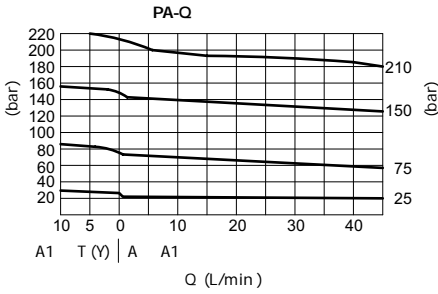
-
- DIN24340A ISO4401
- 4
- 3
·
·
·
·
·





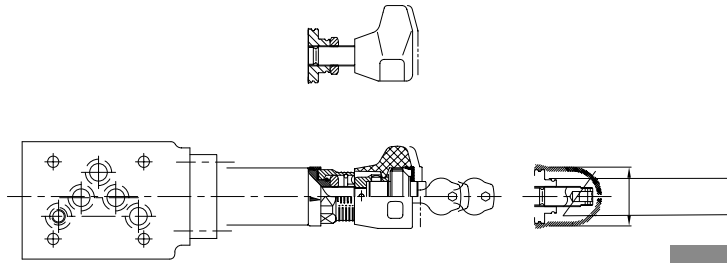
	-
	-
	-30 +80 ()
	-20 +80 ()
mm ² /s	10 800
	NAS1638 9 ISO4406 20/18/15
bar	315
bar	25; 75; 150; 210
bar	150
L/min	50
Kg	2.8

HLP46 $\varnothing = 40 \pm 5$



25bar P_{Amin}-Q
 A1 A2 P2 P1

20L/min A2 P1
 30bar 34bar



中国

+86 400 101 8889

美国

+01 630 995 3674

德国

+49 172 3683463

日本

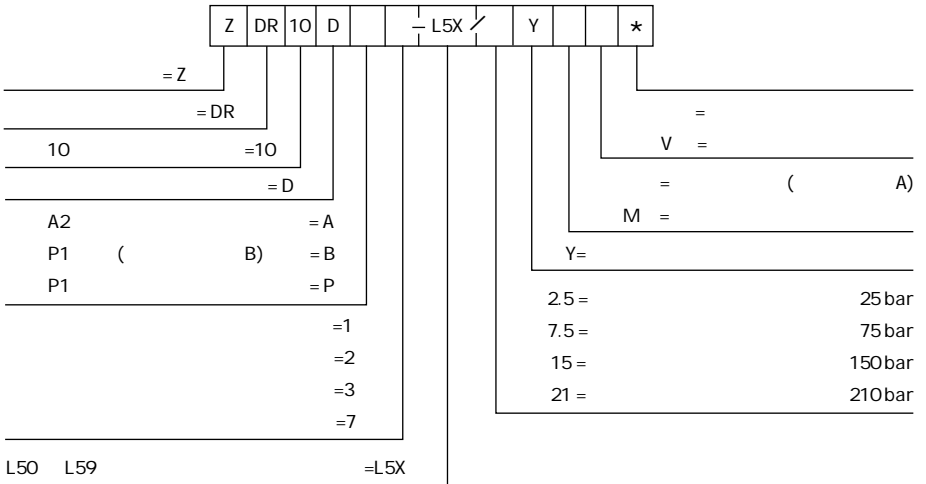
+81 03 6809 1696



©

3.20



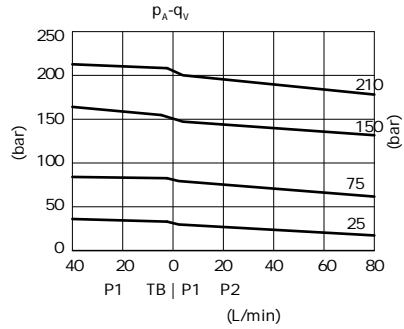
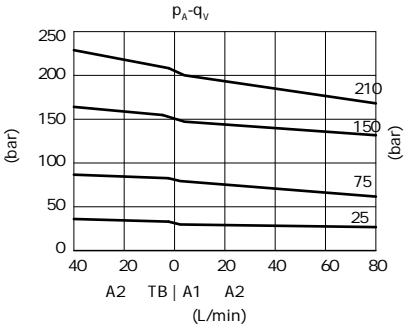


	-	
	-	
	-30 +80 ()	
	-20 +80 ()	
mm ² /s	10 800	
		NAS16389 ISO4406 20/18/15
() bar	315	
() bar	25; 75; 150; 210	
bar	150	
L/min	80	
Kg	2.8	

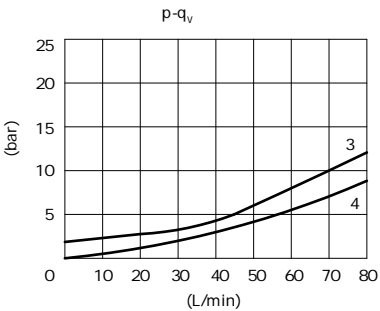
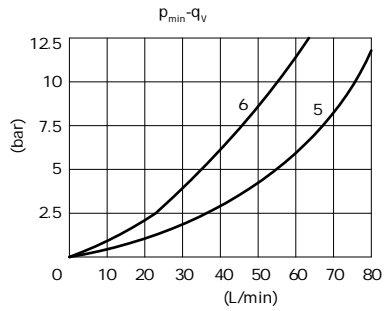
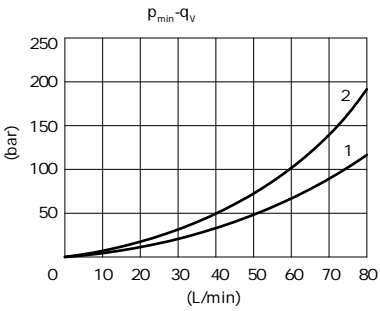
HLP46 $\varnothing = 40 \pm 5$

ZDR 10DA..-L5X/...

ZDR 10DP..-L5X/... ZDR 10DB..-L5X/...

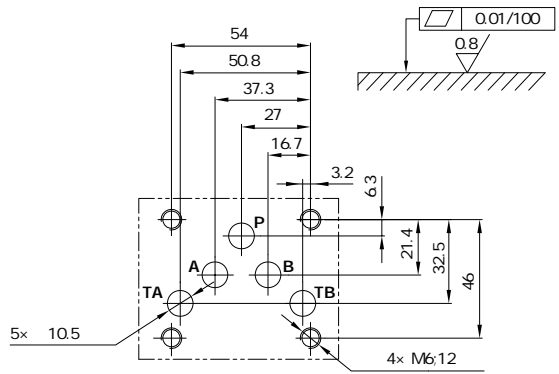


!



- 1 A1 A2
- 2 A2 TB ()
- 3 A2 A1
- 4 A2 A1
- 5 P2 P1
- 6 P1 TB ()

pt=0bar



中国

+86 400 101 8889

美国

+01 630 995 3674

©

德国

+49 172 3683463

日本