



4.11

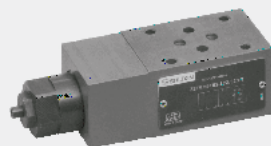
Z2FRM6 型

2FRM6K 型

6

315 bar

32L/min

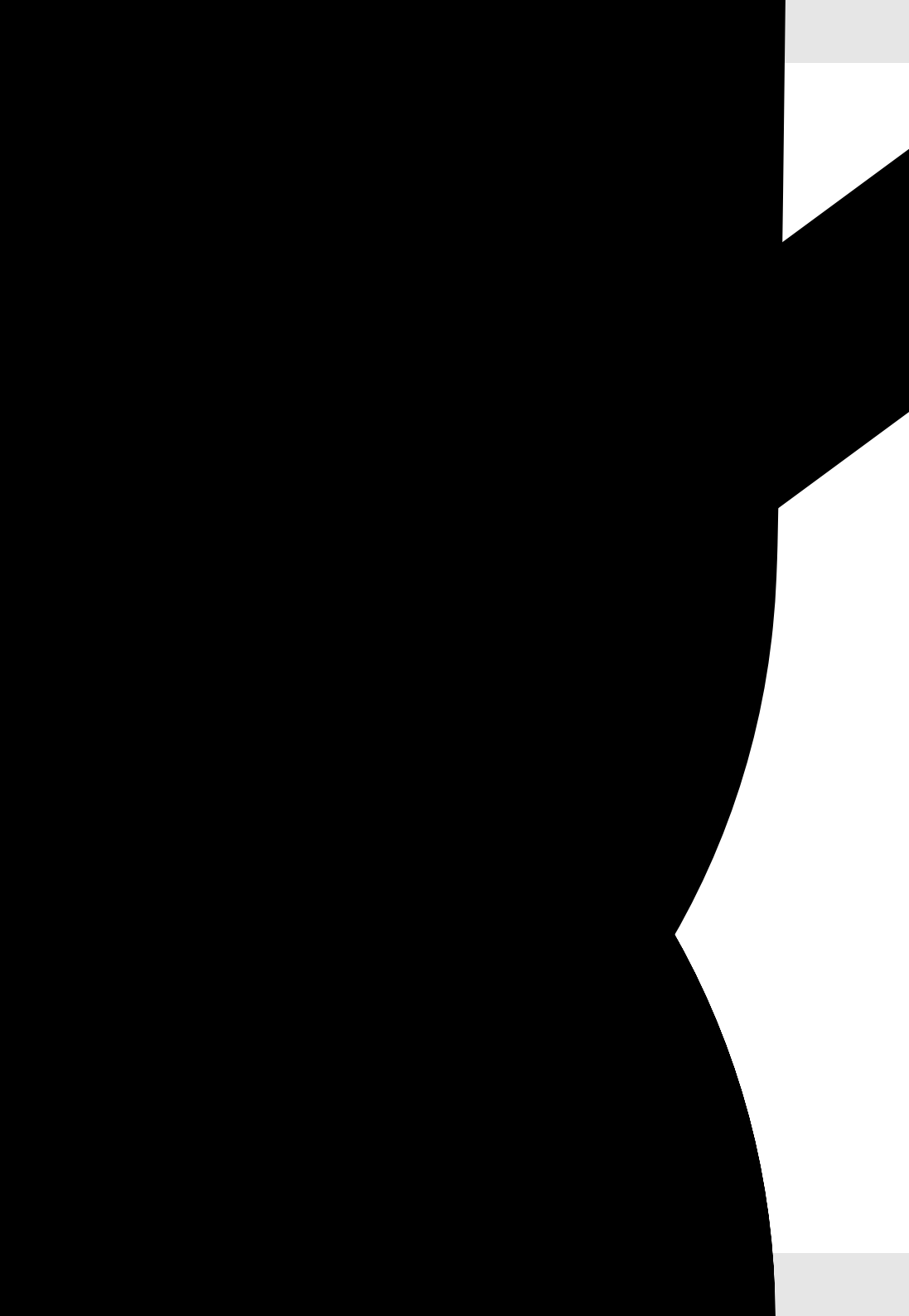


目录

02
03
03
04
04
05-07

特点

-
- DIN 24340 A
- ISO 4401 CETOP-RP 121H
- 1 2
-



(= =)

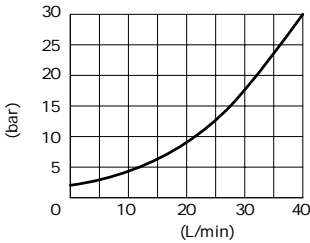
04

	Z2FRM6	2FRM6K
	DIN 24 340A	
	ISO4401 CETOP-RP 121 H	
kg	1.3	A, B T
	1.5	A B
bar	315	
	-20 +80	
mm ² /s	10 800	
L/min	0.05-6; 0.25-32	
	NAS1638 9	ISO4406 20/18/15
bar	18 2FRM6K	
P=315 bar	% ± 3 (Qmax)	

HLP46 =40 ± 5

Z2FRM6

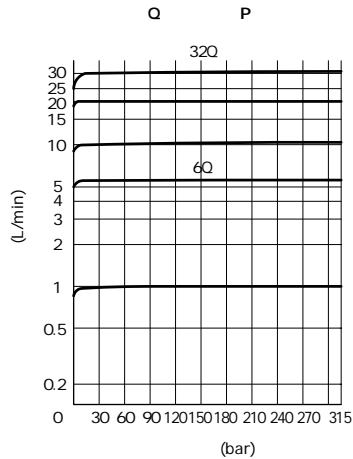
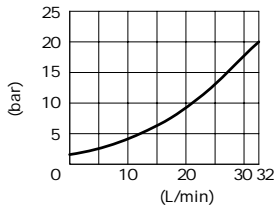
p-Q-



2FRM6K

p-Q-

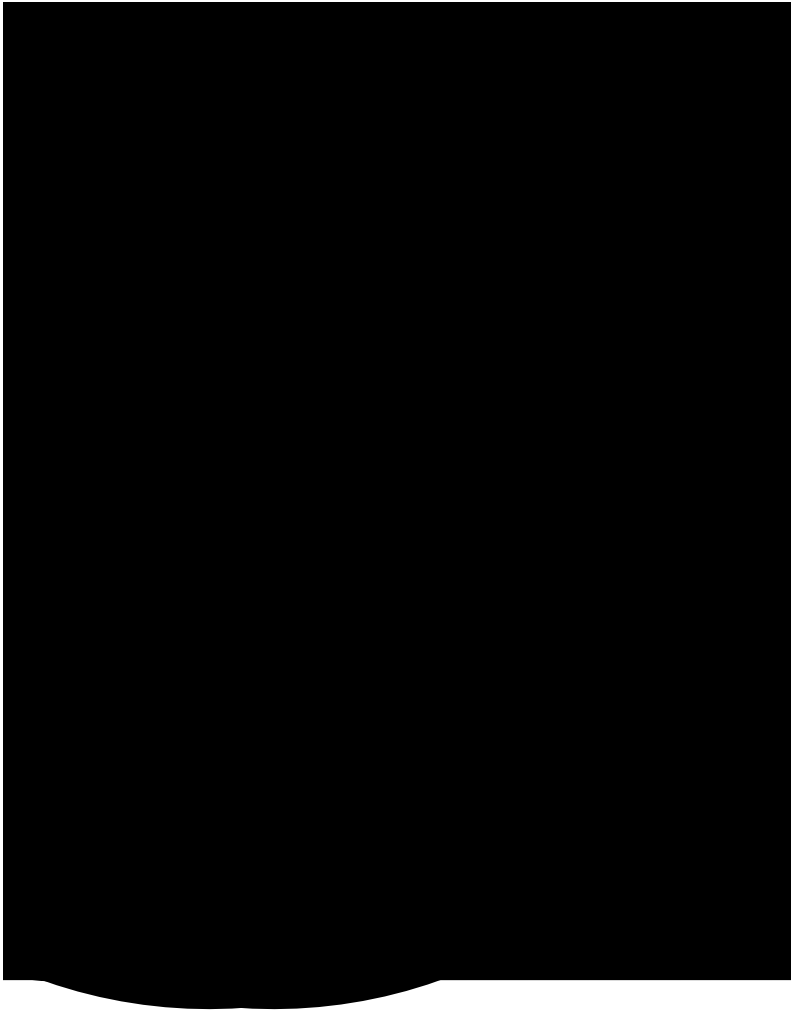
(B A)



:

(

mm)



04

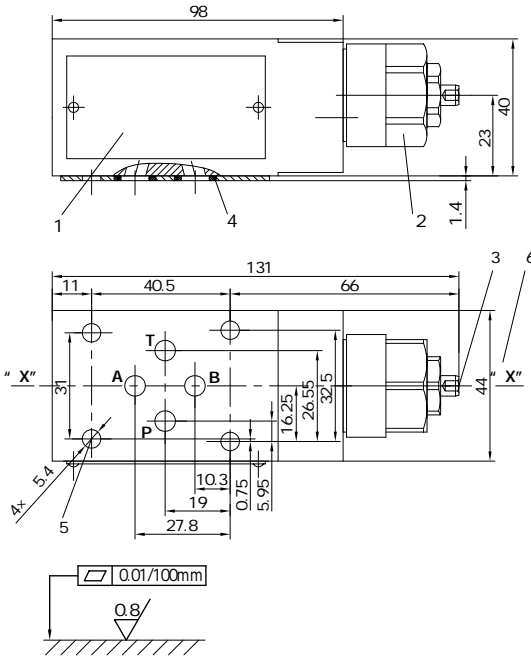
:

(

mm)

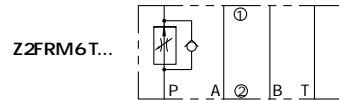
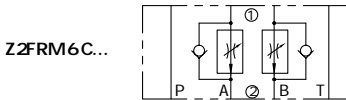
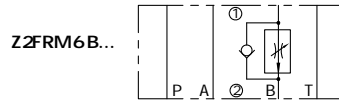
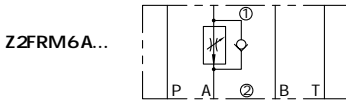
Z2FRM6

Z2FRM6T



- 1
- 2 Z2FRM6K
27A/F M_k=50Nm
- 3 3A/F
- 4 O 9.25× 1.78
A2 B2 P2 T2
- 5 M5× **
GB/T70.1-10.9 M_k=50Nm
- 6 "X"- "X"
A B C
T T
P
- 7 Z2FRM6A2... A
- 8 Z2FRM6B2... B

"X" - "X"

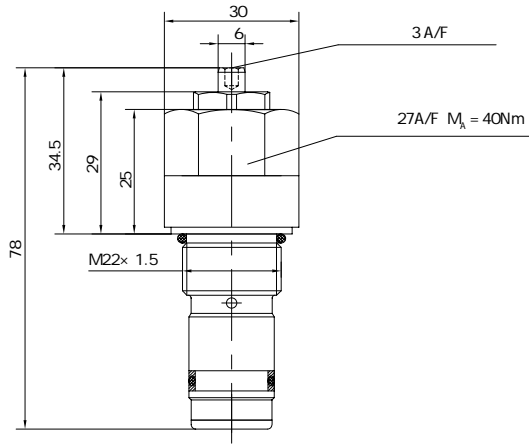


:

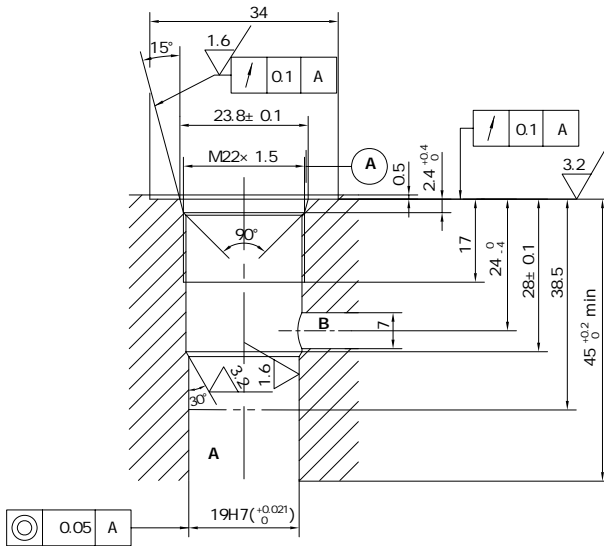
(

mm)

2FRM6K



DIN ISO 7789



中国

+86 400 101 8889

美国

+01 630 995 3674

德国

+49 172 3683463

日本

+81 03 6809 1696



©



4.12

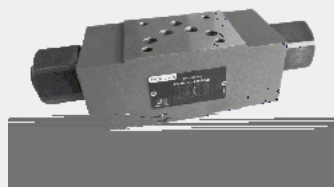
Z2FRM10 型

2FRM10K 型

10

210bar

60L/min



目录

02
03
03
04
04
05-07

特点

-
- DIN 24340 A
- ISO 4401 CETOP-RP 121H
- 1 2
-

Z2FRM10

2FRM10K

Z2FRM10

2FRM10K

9

A1/B1(A)

A2/B2(B)

3

A2/B2(B)

3

7

8

5

A1/B1 A

5

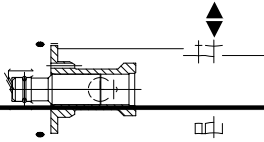
A1/B1 A

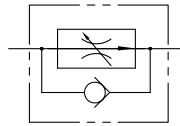
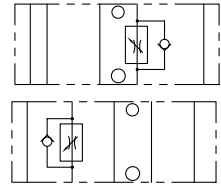
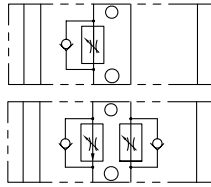
5

A2/B2 B

A1/B1 A

6

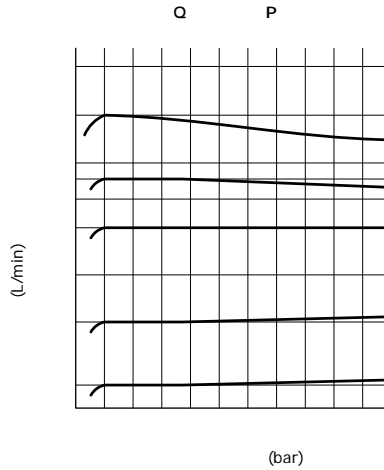
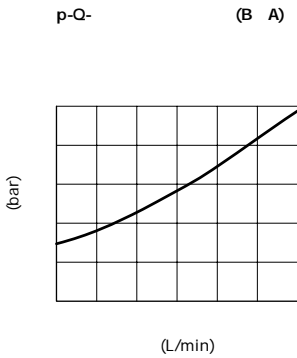




	Z2FRM10		ZFRM10K
	DIN 24 340A		
	ISO4401 CETOP-RP 121 H		
kg	4.7 (A B P)		0.6
	5.3 (A B)		
bar	210		
	-20 +80		
mm ² /s	10 800		
L/min	0.5-60		
	NAS1638 9 ISO4406 20/18/15		
bar	ZFRM10K	1.8	
P=210bar	%	± 3 (Qmax)	

HLP46 $\vartheta = 40 \pm 5$

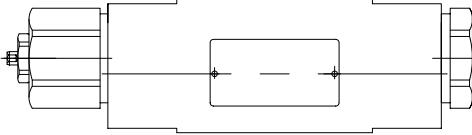
ZFRM10K



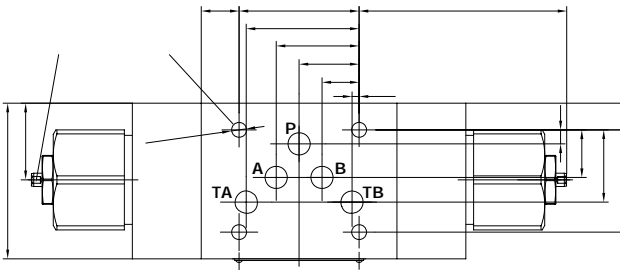
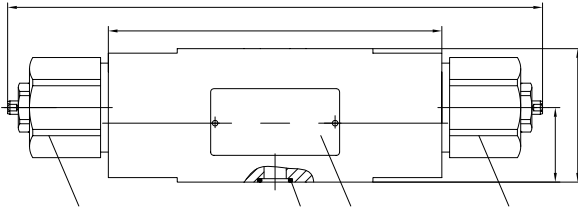
:

(

mm)



04



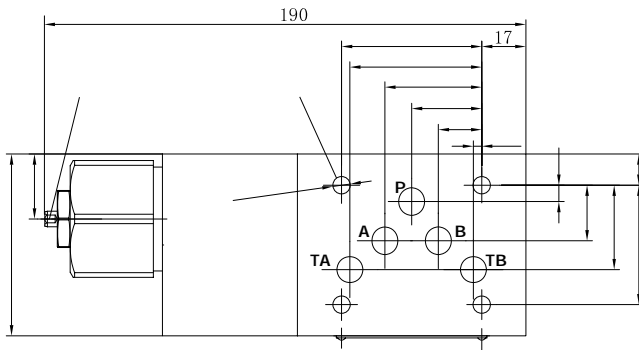
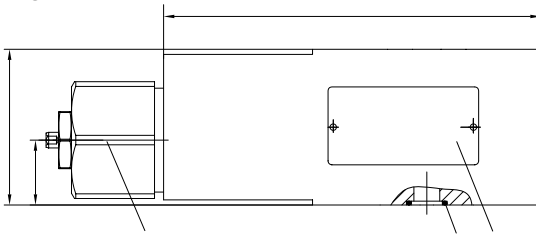
:

(

mm)

2

Z2FRM10P



1

2 Z2FRM10K

41A/F $M_k=120\text{Nm}$

3 , 3A/F

4 O 12x 2

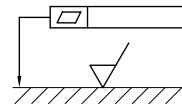
A2 B2 P2 TA2 TB2

5

M6x ** GB/T70.1-10.9 $M_k=15.5\text{Nm}$

6 Z2FRM10A2... A

7 Z2FRM10B2... B



中国

+86 400 101 8889

美国

+01 630 995 3674

德国

+49 172 3683463

日本

+81 03 6809 1696



©