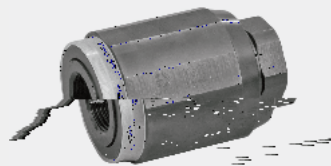


节流阀 / 单向节流阀

MG/MK



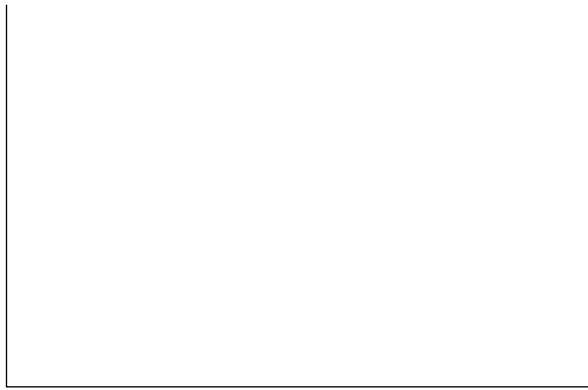
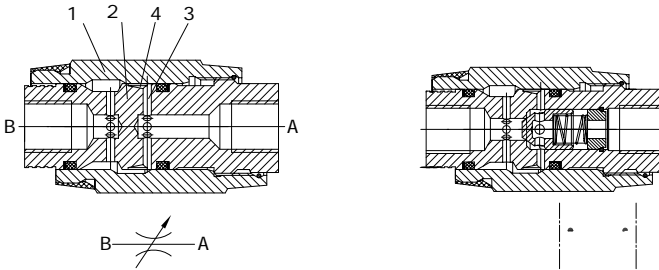
02
02
03
03
04

MG MK

MG 型节流阀



MK 型单向节流阀



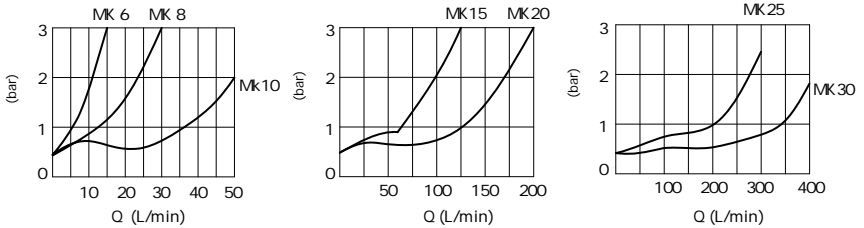
技术参数

		6	8	10	15	20	25	30	
	kg	0.3	0.4	0.7	1.3	2.2	3.6	4.5	
	bar	315bar							
MK	bar	0.5							
	L/min	400							
	mm ² /s	10 800							
		-30 +80							
		;							
		NAS 1638 9				ISO4406 20/18/15			

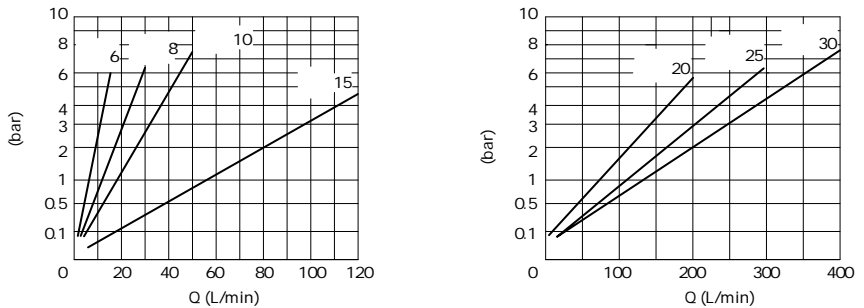
性能曲线

HLP46 $\varnothing = 40 \pm 5$

ΔP -Q 性能曲线 (通过打开的单向阀, 节流口关闭 (MK 型))

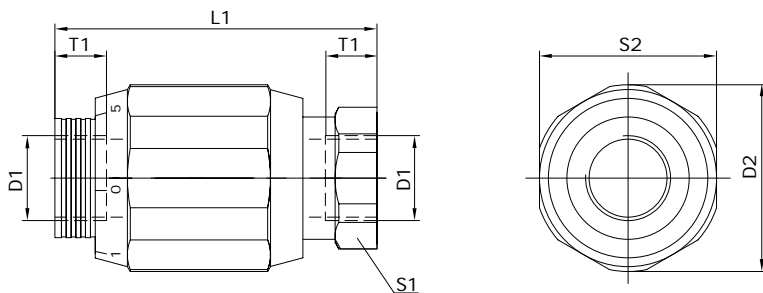


ΔP -Q 性能曲线 (通过打开的节流口 (MG 和 MK 型))



元件尺寸 (MK 与 MG 同)

(mm)



	D1		D2	L1	S1	S2	T1
6	G1/4	M14× 1.5	34	65	22	32	12
8	G3/8	M18× 1.5	38	65	24	36	12
10	G1/2	M22× 1.5	48	80	30	46	14
15	G3/4	M27× 2	58	100	41	55	16
20	G1	M33× 2	72	110	46	70	18
25	G1 1/4	M42× 2	87	130	55	85	20
30	G1 1/2	M48× 2	93	150	60	90	22